

THE WINCHESTER



Illustrations and plans are artist's conceptions of typical homes and do not necessarily represent final plans, designs and elevations.

One-story residence with 3 bedrooms, 2.5 baths, unfinished walk-out basement and two-car garage.

Approximately 2014 finished square feet:

2014 Main Floor

1996 Unfinished Basement

578 Two-car Garage

Fabulous custom features are offered in this delightful, one-story single-family home. Enjoy archways and tray ceilings, plus niche areas including a catch-all for keys and mail just off the garage entry, and a butler's pantry connecting the dining room to the kitchen.

The kitchen, breakfast nook and great room provide an open living area that connects the secondary bedrooms to the private master suite. A tray ceiling, huge walk-in closet and luxurious master bath create the perfect retreat.

As with all single-family plans available at Willow Ridge, you'll find expandable space and extra storage in the unfinished basement.

Exterior Craftsmanship

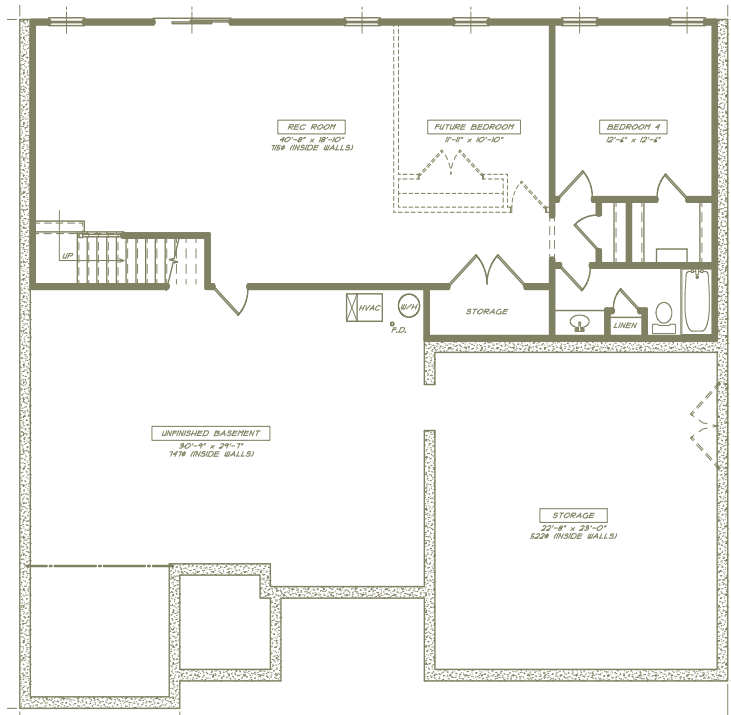
- 30-year dimensional shingles with metal accents
- Low-maintenance vinyl siding - combinations of vertical, horizontal and shingle siding
- Textured, fiberglass, 6-panel front door with sidelight and decorative entry handle set with deadbolt in gunmetal finish
- Cultured stone or brick accents on front elevation
- Covered front porch with tapered columns
- Beautifully landscaped and seeded yards tailored to suit each private lot setting
- Expansive rear deck or patio perfectly suited for entertaining
- Concrete steps and walk leading to concrete drive
- Mailboxes, lighted city streets and community sidewalks
- Exterior lighting - quality lanterns on garage exterior and rear and basement doors, overhead fixtures on covered front porch
- Carriage-style garage doors with decorative hardware, I-drive opener, keyless entry and two openers

DISTINCTIVE LIVING BY
PHEASANT RUN





Main Floor



Basement

Distinctive Living Features

- Hardwood flooring on entire main floor
- Tray ceiling in living and dining rooms
- Peninsula-style 3-sided gas fireplace
- Porcelain tile in all baths and laundry room
- Wall-to-wall carpeting in all bedrooms
- Molded, 2-panel doors with elegant arched top panel and brushed nickel hardware
- Enhanced decorative bath accessories to include Delta sink, shower and tub fixtures in Brilliance Stainless Steel
- Stainless Steel Whirlpool Appliance Package with smooth cook-top range with oven, side-by-side refrigerator and freezer with ice and water dispensers, dishwasher and space-saver microwave
- Staggered kitchen cabinetry with crown molding and granite countertops, under mount sink and pull spray faucet
- Custom lighting package includes recessed lighting, ceiling fans in family room and all bedrooms, chandelier in formal dining room, pendant lighting in kitchen and overhead lighting in all secondary bedrooms
- Pedestal sink in powder room
- Cable and phone jacks in all bedrooms and living areas
- Neutral paint tones on walls, complimentary color on doors and trim work, white ceilings

Interior Design Elements

- 9-foot ceilings on remaining main floor
- Two convenient coat closets near front door and garage entry
- Garage entry catch-all area for mail, keys
- Butler's pantry connecting kitchen and dining room
- Spacious kitchen with breakfast bar and walk-in pantry that opens to great room
- Direct, main floor access to house from garage
- Laundry room on main floor just outside master suite, washer/dryer connections provided and overhead shelving
- Luxurious master bath with oval soaking tub with tile surround, separate shower, dual vanity and linen closet
- Large secondary bedrooms with spacious closets and shared hall bath
- Walk-out basement with future fourth and fifth bedroom, recreation room and full bath possible
- Huge storage room under garage with access to outside areas

Illustrations and plans are artist's conceptions of typical homes and do not necessarily represent final plans, designs and elevations.