

THE SUMMIT



Illustrations and plans are artist's conceptions of typical homes and do not necessarily represent final plans, designs and elevations.

Two-story residence and two car garage
3 Bedrooms and 2.5 Baths

Approximately 2113 finished square feet
855 Main Floor 855 Un-Finished basement
1258 Second Floor 525 Garage

This charming two-story single family home, is perfectly designed for modern day living and entertaining with kitchen, dining and living areas adjacent to one another.

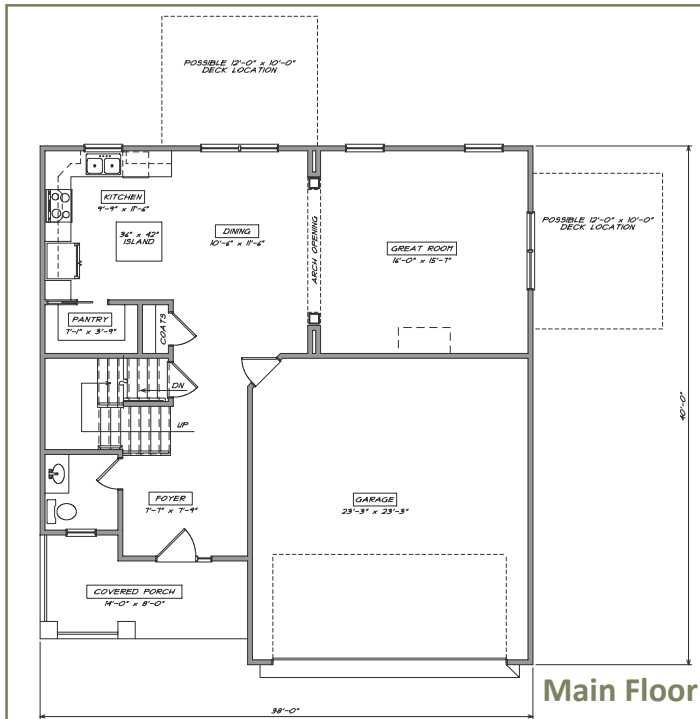
An expansive deck is accessible from the great room providing a convenient outdoor living area for friends and family to enjoy.

The second floor master suite offers an enormous walk-in closet and a luxurious bath with a garden tub, separate shower compartment and dual vanity. Two spacious secondary bedrooms, an additional full bath and sunlit loft offer endless possibilities including a home office, library nook, kid's corner and more.

The second floor is complete with a convenient and functional laundry room highlighted with a laundry sink and extra storage closet. An additional 885 square feet is available in the walkout basement providing the opportunity to expand your living space with a fourth bedroom, full bath and recreation room.

Exterior Craftsmanship

- 30 year dimensional shingles
- Low maintenance vinyl siding – combination of vertical, horizontal and shingle styles create unique architectural appeal
- Textured, fiberglass, 6-panel front door with decorative entry handle set and deadbolt in gunmetal finish
- Cultured stone or brick accents on front elevation
- Covered front porch with decorative columns and rails
- Expansive rear deck or patio perfectly suited for entertaining
- Concrete steps and walkways leading to concrete driveway
- Mailboxes, lighted city streets and community sidewalks
- Beautifully landscaped and seeded yards tailored to suit each private lot setting
- Recessed lighting front porch; lanterns on sides of the garage door, rear door and basement door

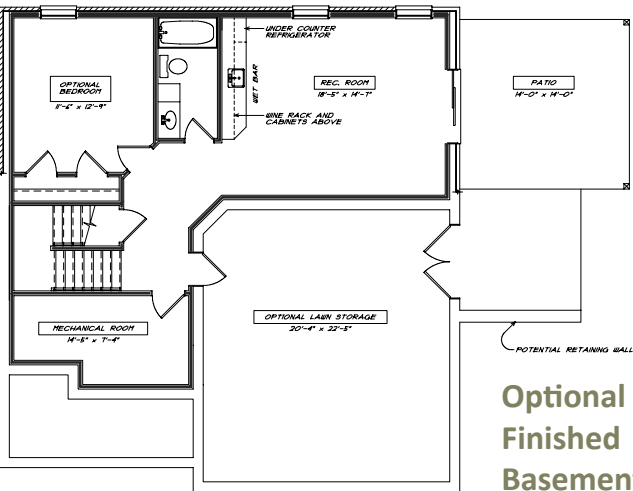
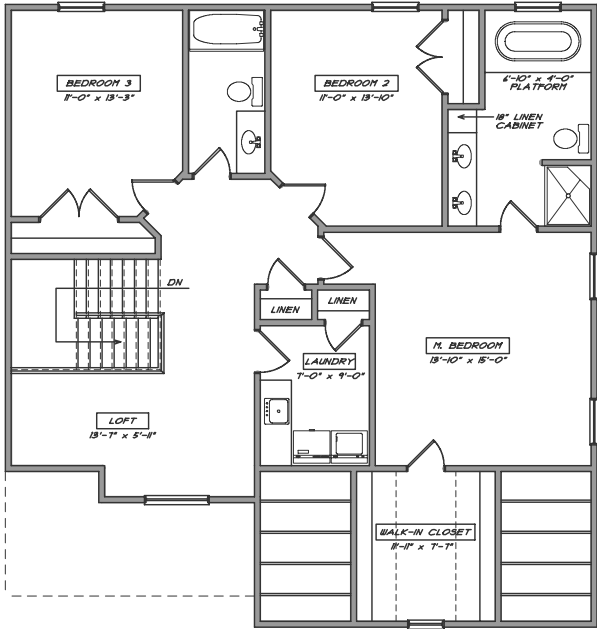


Distinctive Living Features

- Gas fireplace with mantel and slate surround
- Hardwood flooring in entry, great room, powder room and kitchen
- Entry to great room highlighted with elegant archway
- Staggered kitchen cabinets accented with crown molding and under cabinet lighting
- Porcelain tile flooring in laundry room, master bath and secondary baths
- Molded, two panel doors with elegant arched top panel and brushed nickel hardware
- Enhanced decorative bath accessories in brushed nickel to include Delta sink, shower and tub fixtures in Brilliance Stainless finish
- Luxurious master bath with cultured marble vanity tops, dual sinks, linen cabinet, separate shower and oval soaking tub with tile surround
- Custom lighting package includes recessed lighting in kitchen, great room, stairwell, upstairs hallway, master bath and ceiling fans in all living and bedroom areas
- Neutral paint tones on walls and ceilings, accented with complimentary color on trim and doors

Interior Design Elements

- 9' ceilings first floor and basement only
- Spacious kitchen with island workstation, large walk-in pantry, breakfast/dining area, abundant cabinet and countertop space
- Open floor plan combines kitchen, dining, living and outdoor spaces for ease of living and entertaining
- Master suite with luxurious master bath and huge walk-in closet
- Convenient upstairs laundry room with extra storage closet and laundry sink
- Spacious secondary bedrooms
- Second floor sunlit loft offers an array of possibilities including a library nook, home office, kids corner, and more
- Walk-out basement with future fourth bedroom, full bath and recreation room possible
- Under garage storage area perfect for work shop or exercise room



Illustrations and plans are artist's conceptions of typical homes and do not necessarily represent final plans, designs and elevations.