

THE JAMES



Illustrations and plans are artist's conceptions of typical homes and do not necessarily represent final plans, designs and elevations.

This beautiful two-story, 3-bedroom, 2.5 bath villa is perfect for any family. It features a master suite conveniently located on the first floor and a great room with vaulted ceilings, recessed lighting and a raised, three-sided gas fireplace framed in an elegant archway.

A stylish kitchen offers plenty of countertop space, cabinetry, a pantry and an island workstation. The second floor provides a spacious multi-purpose loft ideal for a children's retreat or perhaps a home office.

Two-story villa with 3 bedrooms and 2.5 baths.

Approximately 1747 finished square feet:

1124 First floor

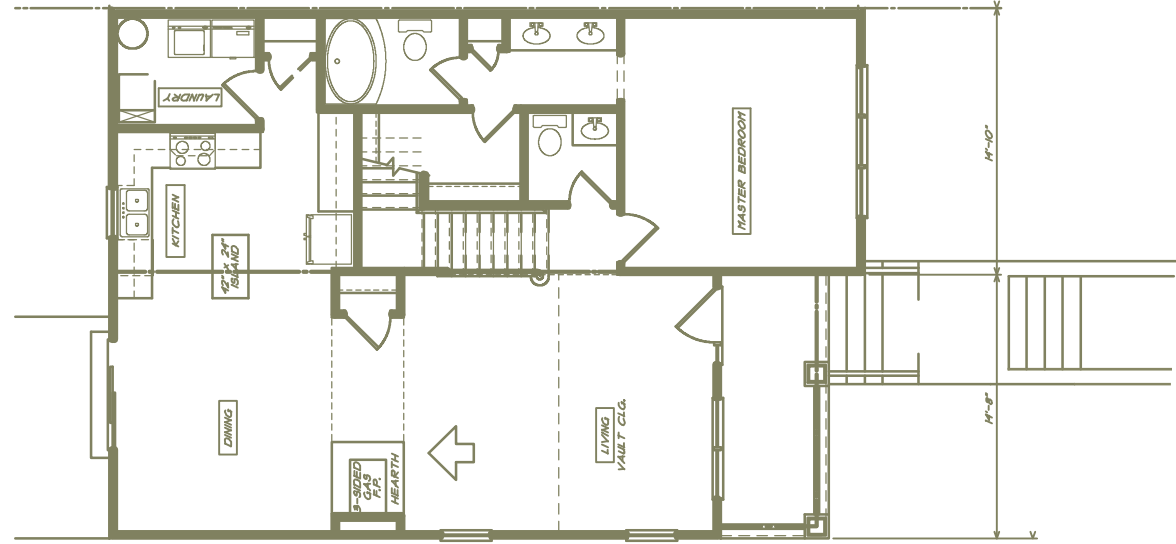
623 Second floor

Exterior Craftsmanship

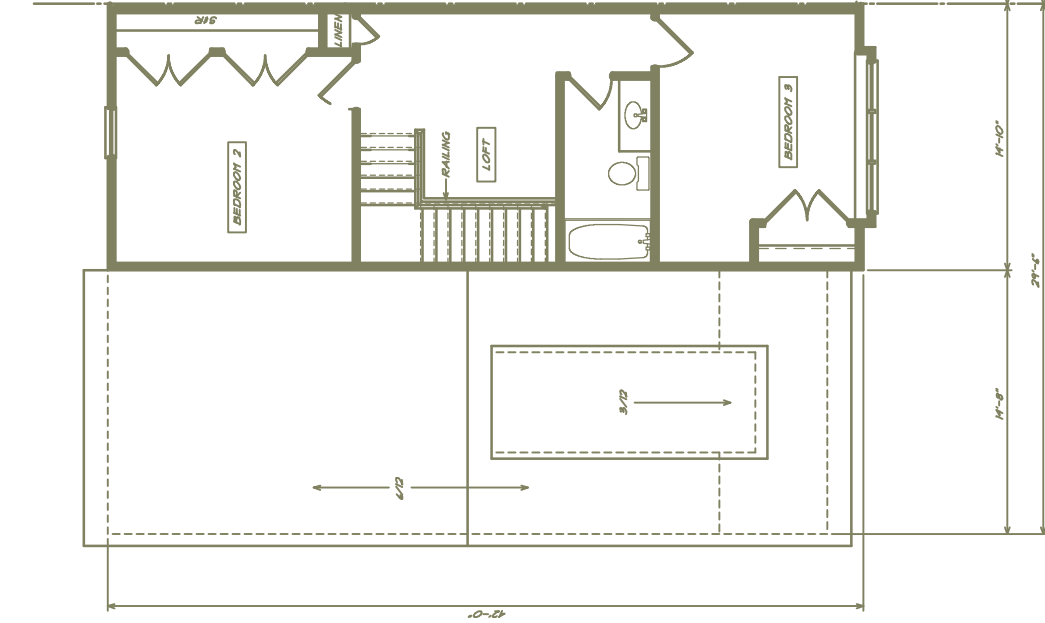
- 30-year dimensional shingles
- Low-maintenance vinyl siding – combination of vertical, horizontal and shingle styles create unique architectural appeal
- Textured, fiberglass, 6-panel front door with light transom and decorative entry handle set
- Cultured stone or brick accents on front elevation
- Covered front porch with decorative columns and rails
- Beautifully landscaped and seeded yards tailored to suit each private lot setting
- Expansive rear deck or patio perfectly suited for entertaining
- Outdoor storage facility with oversized front access door
- Concrete steps and walkways leading to concrete driveway
- Mailboxes, lighted city streets and community sidewalks
- Overhead front door lighting and rear door lantern

DISTINCTIVE LIVING BY
PHEASANT RUN





Main Floor



2nd Floor

- Distinctive Living Features**
- Raised, three-sided gas fireplace with shelf mantel
 - Hardwood flooring in great, dining, kitchen and powder room
 - Porcelain tile flooring in laundry room, master bath and secondary bath
 - Wall-to-wall carpeting stairway, loft, all bedrooms and bedroom closets
 - Molded two-panel doors with elegant arched, top panel and brushed nickel hardware
 - Pedestal sink in powder room
 - Oval soaking tub and shower with optional whirlpool feature in master bath
 - Delta sink, shower and tub fixtures in Brilliance stainless finish
 - Custom lighting package includes recessed lighting in living room, dining room, kitchen and loft area; ceiling fans in the living room and all bedrooms

Interior Design Elements

- First floor master suite with walk-in closet and master bath
- Vaulted ceiling in living room, 9' ceilings elsewhere on first floor
- Oversized laundry room with washer/dryer connections and shelving
- Spacious kitchen with island flowing into adjacent dining and living areas
- Roomy secondary bedrooms
- Multi-purpose loft area on second floor — perfect children's retreat, study area or home office

Illustrations and plans are artist's conceptions of typical homes and do not necessarily represent final plans, designs and elevations.