

# THE FARMINGTON



Illustrations and plans are artist's conceptions of typical homes and do not necessarily represent final plans, designs and elevations.

Two-story villa with 2 bedrooms, 2.5 baths, unfinished bonus room\* and one-car garage.

Approximately 1520 finished square feet:

760 First Floor	205 Unfinished Bonus Room
760 Second Floor	317 Garage

\*This is a Willow Ridge Flex-Plan. Several options are available; consult a Willow Ridge team member for details.

This charming two-story plan features convertible living space and room to grow with additional square footage available in the unfinished bonus room above the garage. This 2-bedroom, 2.5 bath villa can be easily transformed into a 3-bedroom with a kid's corner, home office or multi-purpose space that doubles as a guest room.

On the main floor, a beautiful arched entry transitions to the formal dining room, located just off the kitchen for ease of entertaining. In the rear of the home, you will enjoy a private family room with sliding patio doors that lead to a covered rear porch and private back yard.

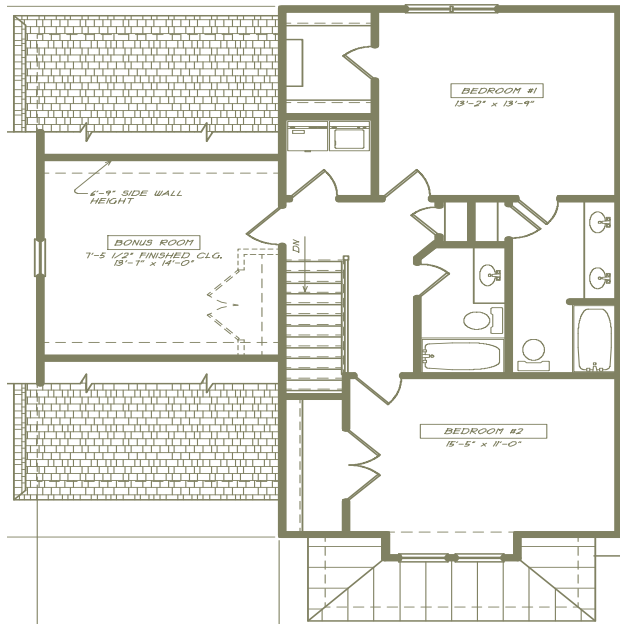
Additional features include a convenient second-floor laundry room, first floor powder room and one-car garage.

## Exterior Craftsmanship

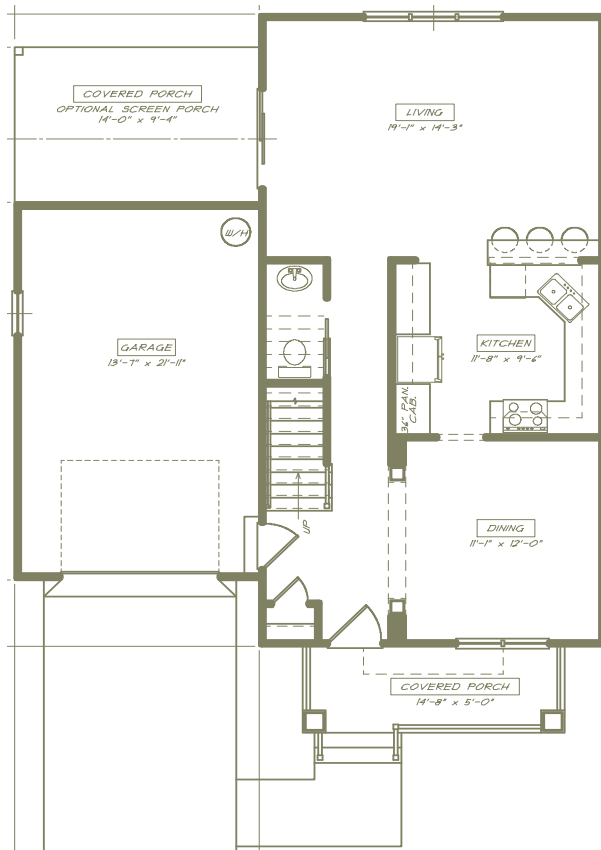
- 30-year dimensional shingles
- Low maintenance vinyl siding - combinations of vertical, horizontal and shingle siding
- Textured, fiberglass, 6-panel front door with decorative entry handle set and deadbolt in gunmetal finish
- Cultured stone or brick accents on front elevation
- Covered front porch with decorative columns and rails
- Beautifully landscaped and seeded yards tailored to suit each private lot setting
- Private rear covered porch perfectly suited for entertaining
- Concrete steps and walkways leading to concrete driveway and private off-road parking
- Mailboxes, lighted city streets and community sidewalks
- Exterior lighting - quality lanterns on garage exterior and overhead fixtures on covered porches
- Carriage-style single-car garage door with decorative hardware, I-drive opener, keyless entry and two openers

DISTINCTIVE LIVING BY  
PHEASANT RUN





**Upper Floor**



**Main Floor**

### Distinctive Living Features

- Hardwood flooring on entire main floor
- Porcelain tile in all baths and laundry room, and porcelain-tiled shower surround in master bath
- Wall-to-wall carpeting on steps, in upstairs hallway and in all bedrooms
- Molded, two panel doors with elegant arched upper panel and brushed nickel hardware
- Pedestal sink and pocket door in powder room
- Delta sink, shower and tub fixtures in Brilliance Stainless Steel
- Stainless Steel Whirlpool Appliance Package with smooth cook-top range with oven, side-by-side refrigerator and freezer with ice and water dispensers, dishwasher and space-saver microwave
- Ceiling fans in family room and master bedroom, overhead lighting in all secondary bedrooms
- Cable and phone jacks in all bedrooms and living areas
- Neutral paint tones on walls, complimentary color on doors and trim work, white ceilings

### Interior Design Elements

- 9-foot ceilings on entire main floor
- Foyer with coat closet
- Arched entry to formal dining room
- Spacious kitchen, with breakfast bar open to family room
- Direct, main floor access to house from garage
- Convenient second-floor laundry room adjacent to all bedrooms, washer/dryer connections provided
- Unfinished bonus room above garage offers expandable living space on the second floor
- Spacious master suite, with walk-in closet and full bath featuring dual vanities, linen closet and tiled tub surround
- Large secondary bedroom with picture window and walk-in closet
- Decorative open stair rails in oak with white spindles

Illustrations and plans are artist's conceptions of typical homes and do not necessarily represent final plans, designs and elevations.